



Mr. Tom Slowinski
V3 Companies

Mr. Joseph Roth
Openlands

Remeandering/Restoring 3 Miles of Spring Creek Within 650 Acres of the Hadley Valley Preserve, Will County, Illinois



**NCER 2013
July 30, 2013**



Objectives:

1. Highlight the partnerships between the Forest Preserve District of Will County, Illinois State Toll Highway Authority, City of Chicago, US Army Corps of Engineers, Chicago District, Openlands, and V3 Companies that led to the restoration of approximately 500 acres of natural area at Hadley Valley Preserve.
2. Discuss how through a design-build-manage process approximately 3 miles of Spring Creek through Hadley Valley were relocated/remeandered.



Project Location

The Forest Preserve District of Will County's Hadley Valley Preserve is located adjacent to the Route 6/I-355 interchange in Will County, Illinois.



openlands
conserving nature for life



Spring Creek Resource Plan Background

- Watershed located in north central Will County
- Watershed encompassed approximately 20 square miles and 8 miles of stream corridor
- First property acquired (Messenger Woods) in 1930
- Preservation Plan formulated in early to mid-1980's and includes 7 plan areas
- FPDWC holdings along Spring Creek are presently 1,925 acres and split into 4 preserve systems
- Successful public referendums in 1999 (\$70M) and 2005 (\$95M) providing funding to assemble Hadley Valley Preserve and leverage with private and public grant funds for the restoration and development of Hadley Valley
- \$2M commitment from referendums have been leveraged into \$10M in partner funds.



openlands
conserving nature for life

Spring Creek Master Plan Awards

- 2011 National Planning Excellence Award for Implementation from the American Planning Association (APA)
- 2010 Planning Excellence Award for Implementation Award from the Illinois Chapter of the APA
- 2009 Illinois Park and Recreation Association Outstanding Conservation Award
- 2008 Chicago Wilderness Excellence in Conservation Award



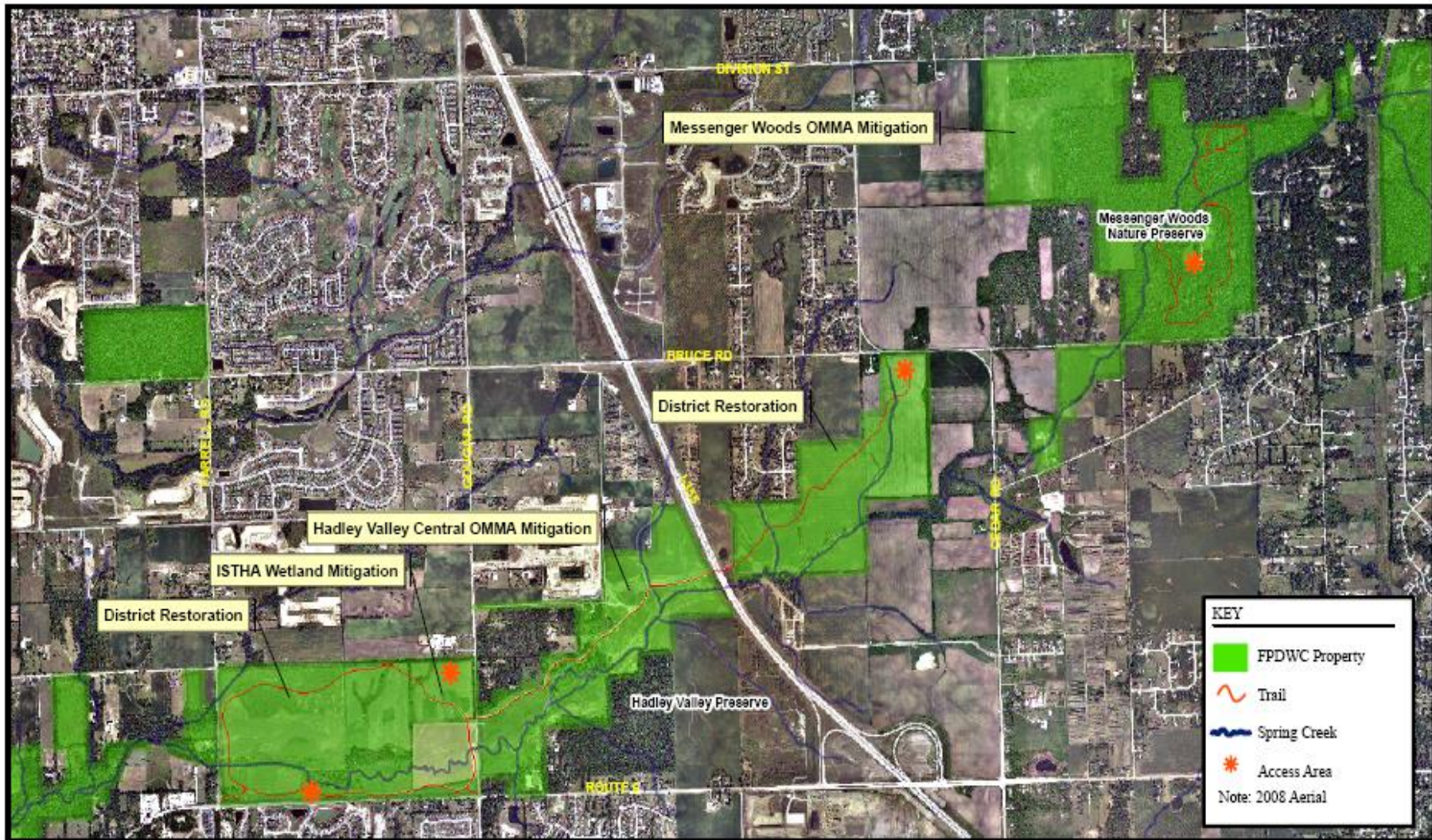
Funding Source:

O'Hare Modernization Program

Openlands is working on 5 wetland mitigation and ecological restoration projects in northeastern Illinois through funding from the O'Hare Modernization Mitigation Account (OMMA).

- 1) Hadley Valley Preserve Central (FPD of Will County)
- 2) Messenger Woods Nature Preserve (FPD of Will County)
- 3) Tinley Creek Wetlands (FPD of Cook County)
- 4) Deer Grove East Forest Preserve (FPD of Cook County)
- 5) Drummond Flood Plain (Midewin National Tallgrass Prairie)

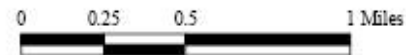




RESTORATION AREAS IN THE SPRING CREEK GREENWAY

FOREST PRESERVE DISTRICT OF WILL COUNTY

038930/Spring Creek Greenway/Spring Creek Greenway Restoration Areas and
 Created by: 3/24/10/10/11





Hadley Valley Restoration Features

Re-meandering of approximately 3 miles of channelized Spring Creek.

Length of Spring Creek in preserve increased by approximately 2,000 feet.

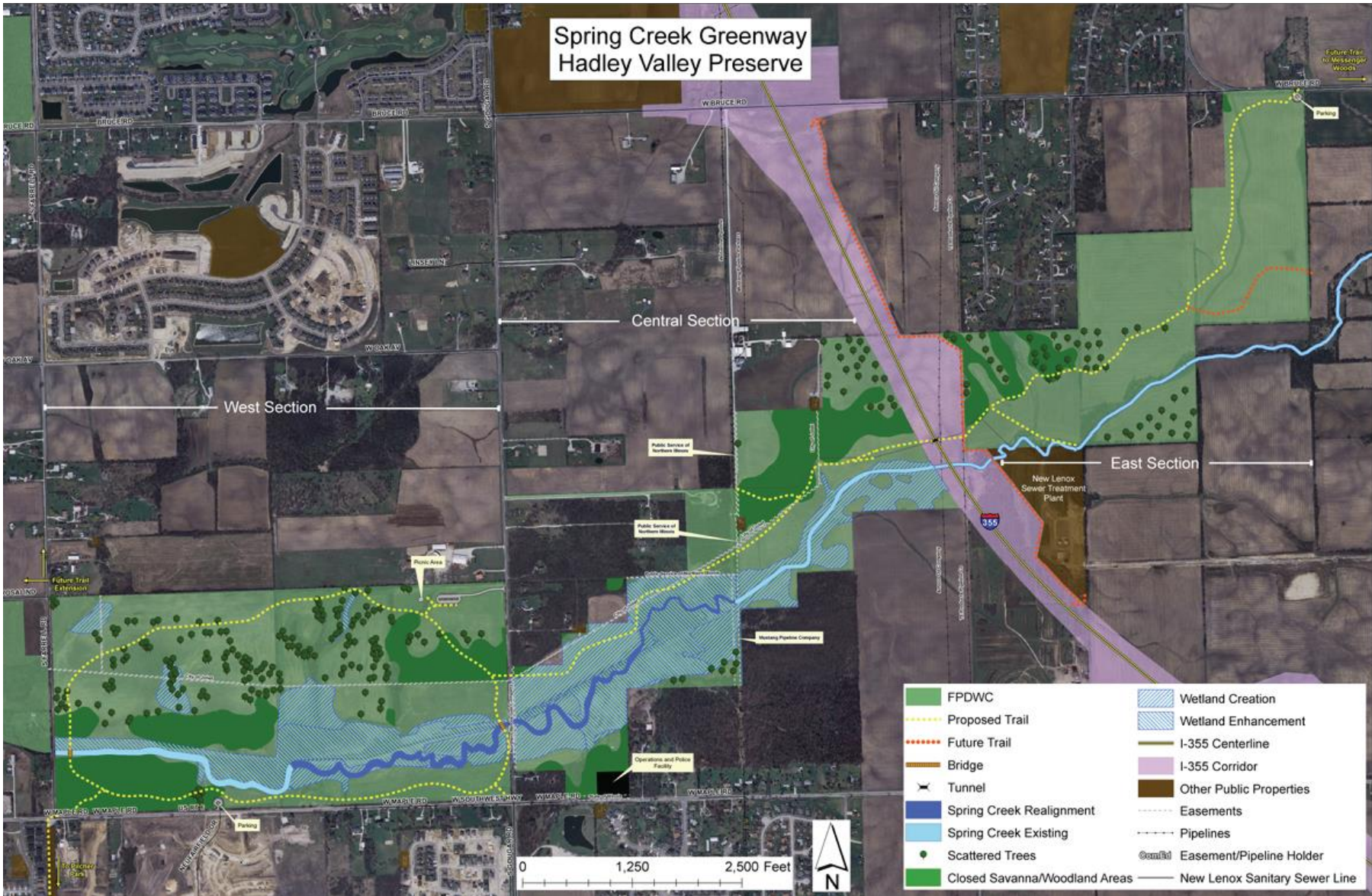
20 rock riffle structures installed to reduce and stabilize grade and provide habitat.

Hydrologic restoration of 150 acres of former drained wetlands.

Over 500 acres of restored native plant communities.

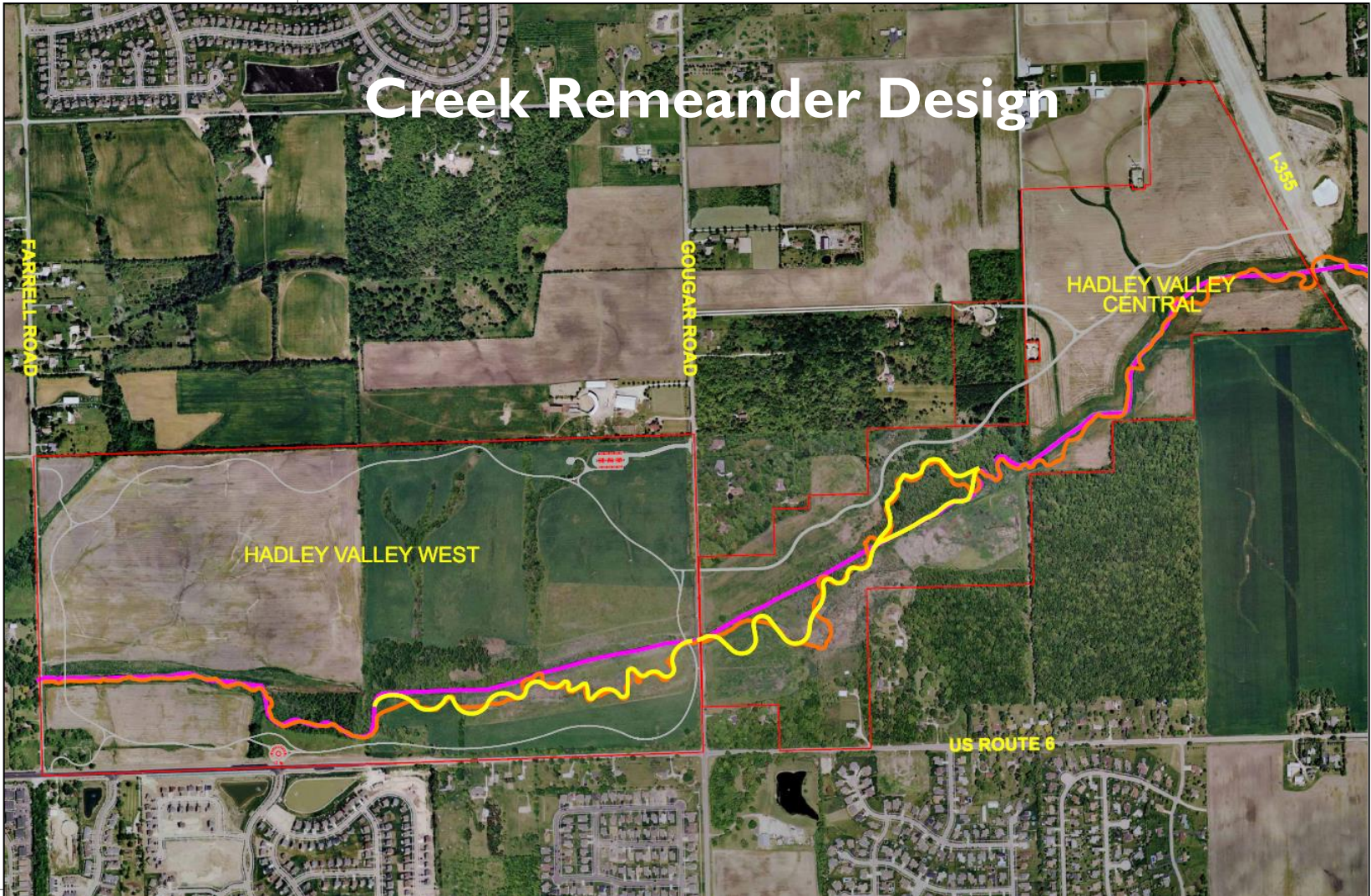


Spring Creek Greenway Hadley Valley Preserve



- | | |
|-------------------------------|-------------------------------|
| FPDWC | Wetland Creation |
| Proposed Trail | Wetland Enhancement |
| Future Trail | I-355 Centerline |
| Bridge | I-355 Corridor |
| Tunnel | Other Public Properties |
| Spring Creek Realignment | Easements |
| Spring Creek Existing | Pipelines |
| Scattered Trees | Easement/Pipeline Holder |
| Closed Savanna/Woodland Areas | New Lenox Sanitary Sewer Line |

Creek Remeander Design



Before and After Hadley West



openlands
conserving nature for life























Design-Build-Manage

Design Parameters:

- 1939 aerial photographs used to locate historic stream channel
- Adjusted historic channel to accommodate urbanized stream flows
- Restored wetland and upland plant communities based on current hydrology
- Modified typical prairie seed mixes to accommodate intensive weed control needs



Design-Build-Manage Construction Parameters:

- Creek construction sequenced to:
 - Facilitate access and movement of equipment
 - Deal with potential storm events and flooding
 - Maintain soil erosion and sediment control
- Adjusted riffle placement and transitions between constructed stream sections based on field conditions
- Coordinated construction and planting scheduling to ensure dormant and growing season seeding occurred at optimal times
- Shoreline toe protection installed based on actual normal water level
- Oversight and management of native vegetation installation by experienced ecologists to make field changes based on actual site conditions



Design-Build-Manage

Management Parameters:

- Intensive multiple season pre-seeding and post-seeding weed control program of herbicide, mowing, and prescribed burn management
- Invasive species management strategy
 - Invasive species monitoring
 - Phased seeding of species tolerant of particular herbicides
 - Boom spraying of selective herbicides
 - Timed mowing
 - Prescribed burn management



Re-meandered and Restored Spring Creek Reduces Flooding and Recharges Groundwater

Restored wetlands and surrounding uplands of the Hadley Valley Preserve help recharge the local groundwater aquifer which is a critical source of drinking water for Joliet and its adjacent communities.

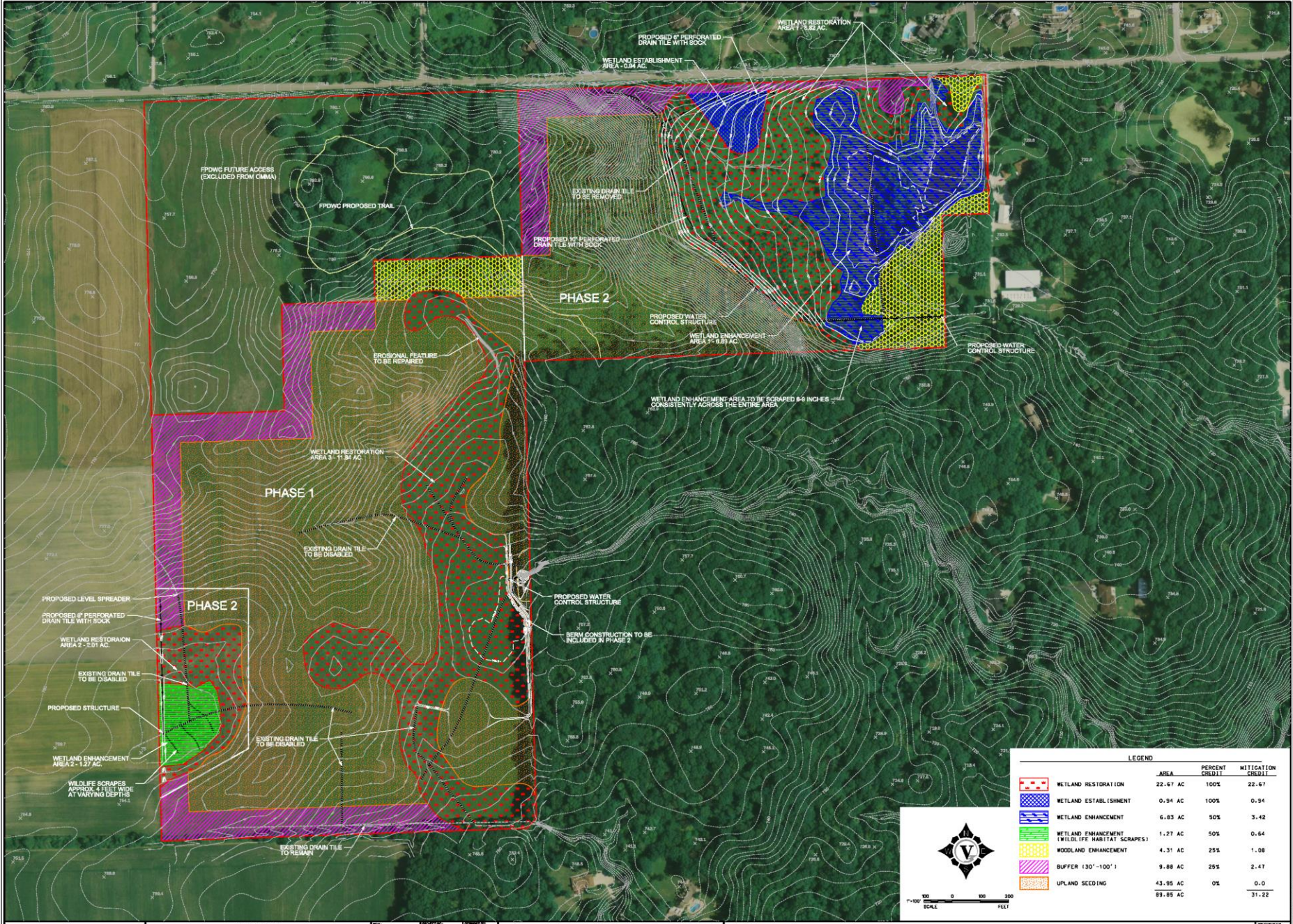


openlands
conserving nature for life



Interpretive Program for Hadley Valley Preserve

Partners joined forces to develop an interpretive program to help educate visitors to Hadley Valley on the value of the restored environment and how it has a far-reaching impact on the surrounding community.



LEGEND				
	AREA	PERCENT CREST	MITIGATION CREST	
	WETLAND RESTORATION	22.67 AC	100%	22.67
	WETLAND ESTABLISHMENT	0.94 AC	100%	0.94
	WETLAND ENHANCEMENT	6.83 AC	50%	3.42
	WETLAND ENHANCEMENT (WILDLIFE HABITAT SCRAPES)	1.27 AC	50%	0.64
	WOODLAND ENHANCEMENT	4.31 AC	25%	1.08
	BUFFER (30'-100')	9.88 AC	25%	2.47
	UPLAND SEEDING	43.95 AC	0%	0.0
		89.85 AC		31.22



V3 Companies
 7818 Jones Avenue
 Wheeling, IL 60091
 800.724.8200 phone
 800.724.8187 fax
 www.v3env.com

REVISIONS			
NO.	DATE	DESCRIPTION	BY
1	08/05/03	REVISION FOR SUBMITTAL	JMO
2	08/05/03	REVISION FOR PERFORATED DRAIN TILE WITH SOCK	JMO
3	08/05/03	REVISION FOR PERFORATED DRAIN TILE WITH SOCK	JMO
4	08/05/03	REVISION FOR PERFORATED DRAIN TILE WITH SOCK	JMO
5	08/05/03	REVISION FOR PERFORATED DRAIN TILE WITH SOCK	JMO
6	08/05/03	REVISION FOR PERFORATED DRAIN TILE WITH SOCK	JMO
7	08/05/03	REVISION FOR PERFORATED DRAIN TILE WITH SOCK	JMO
8	08/05/03	REVISION FOR PERFORATED DRAIN TILE WITH SOCK	JMO
9	08/05/03	REVISION FOR PERFORATED DRAIN TILE WITH SOCK	JMO
10	08/05/03	REVISION FOR PERFORATED DRAIN TILE WITH SOCK	JMO

PROJECT: 080603
 DRAWN: JMO
 CHECKED: JMO
 DATE: 08-05-03
 SCALE: 1"=100'
 PROJECT MANAGER: HOMER GLEN

MESSENGER WOODS

WETLAND MITIGATION PLAN



Thomas Slowinski
V3 Companies
www.V3co.com
tslowinski@v3co.com
630-729-6285

Joe Roth
Openlands
www.Openlands.org
jroth@openlands.org
312-863-6275

Julianne Mason
FPD of Will County
www.fpdwc.org
jmason@fpdwc.org
815-722-5373

